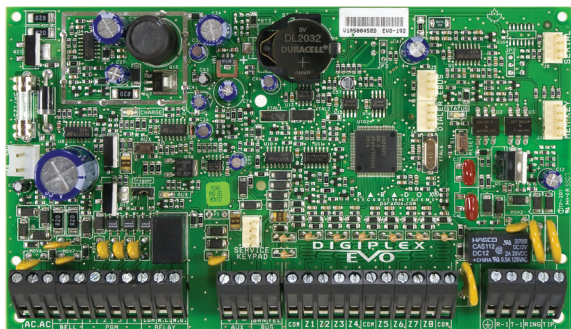


Digiplex EVO

High Security and Access System



Description

Digiplex EVO systems (EVO192) provide the highest level of protection for banks, high-security military and government sites, luxurious residential homes and any place where maximum security is essential. The modular concept of these systems provide installers with labour-saving features that make expanding, installing and servicing these systems quick and convenient.

Expand your system by adding expansion modules anywhere, in any combination, on the 4-wire combus. Modules are connected to the combus at the most convenient location and their zone inputs are assigned to the desired zone and partition. Keyswitches, remote controls, and unused module inputs do not use zones. Once installed, all combus modules (including motion detectors) can be programmed remotely via a keypad, WinLoad, or the BabyWare PC software.

Digiplex EVO integrates access control solutions. Your alarm system user database can be used to manage the access for up to 32 doors, and the monitoring of these doors can be included in any partition. By merging security and access control, Digiplex EVO systems increase the level of protection offered by security systems to a whole new level.

Feature Comparison

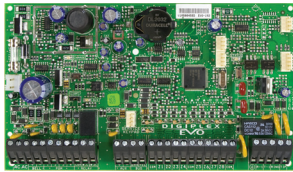
Feature	EVO192
Maximum Zones*	192
On-board Zones	8 (16 with ATZ)
Partitions	8
User Codes	999
Multibus	✓
Sleep Arming	✓
Panel In-field Firmware Upgradable	✓
Access Control (Doors)	32
Access Levels / Schedules	16 / 32
Events Buffered	2048
PGMs	250 (5 on-board)
PGM +/- Trigger	✓
Virtual Zones**	32
Expansion Modules*	254
Supports IP/GPRS/GSM Communication (PCS Series)	✓
Supports VDMP3 Plug-in Voice Module	✓
Supports IP150 Internet Module	✓
Software	WinLoad, NEware, BabyWare
Listen-in Capabilities	✓

* Can be any combination of hardwire, wireless or addressable zones, or modules

** Automate PGM activations without occupying security zones

System Overview

Control Panels



EVO192: 8 to 192-Zone Control Panel

PCS Series

Communicator Modules



- Report via GPRS to IPR512 monitoring receiver
- Report via GSM/GPRS (PCS250 only)
- Report via GPRS (PCS250G only)
- Upload/download with WinLoad/BabyWare via GPRS
- Send and receive SMS messages

IP150

Internet Module



- IP reporting
- Send emails
- Control and monitor via web browser
- Connect directly to panel via 4-pin port

VDMP3

Plug-in Voice Module



- Record a Site ID to identify the installation site
- Send voice messages (8 phone numbers)
- Control and monitor via phone
- Mount on control panel or PCS module

Software & Accessories

- | | |
|-----------|---------------------------|
| BabyWare: | PC Software |
| WinLoad: | Installer Software |
| NEware: | End-user Software |
| PMCS: | Memory Key |
| InField: | Firmware Upgrade Software |
| 307USB: | Direct Connect Interface |
| CV4USB: | RS-485/RS-232 Converter |
| TEMP07: | Temperature Sensor |
| iParadox: | Alarm System Control |



Keypads



TM50

- | | |
|--------|--|
| TM50: | Intuitive Touchscreen |
| K656: | Touch Sense Keypad |
| K07C: | Grafica Color LCD Keypad |
| K641: | 32-Character Blue LCD Keypad |
| K641R: | 32-Character Blue LCD Keypad with Integrated Card Reader |

Digital Motion Detectors



DG85

- | | |
|--------|---|
| DM50: | Dual Element Motion Detector |
| DM60: | Quad Element Motion Detector |
| DM70: | Dual-optic High-performance PIR |
| DG85: | Outdoor Dual-optic High-performance PIR |
| DG457: | GlassBreak Detector |
| DG467: | 360° Ceiling-mounted PIR |

Zone Expansion & Door Contact Modules



ZX32PSD

- | | |
|----------|---------------------------|
| ZC1: | Door Contact Module |
| ZX1: | 1-Zone Expansion Module |
| ZX4: | 4-Zone Expansion Module |
| ZX8: | 8-Zone Expansion Module |
| ZX8D: | 8-Zone Expansion Module |
| ZX16D: | 16-Zone Expansion Module |
| ZX32PSD: | 32-Zone Expansion Module |
| RTX3: | Wireless Expansion Module |

Access Control Modules



ACM12



R915

- | | |
|--------|-------------------------------------|
| ACM12: | 4-Wire Access Control Module |
| R910*: | 4-Wire Proximity Card Reader |
| R915*: | 4-Wire Proximity Card Reader/Keypad |

* Other Wiegand Readers + Cards Available

Modules: Listen-in / Power and Hub / Special



SUB1

- | | |
|--------|------------------------------------|
| LSN4: | Listen-in Module |
| SUB1: | Listen-in Substation |
| PGM4: | 4-Output Expansion Module |
| PRT3: | Integration Module |
| PS17: | 1.7A Power Supply Module |
| HUB2: | 2-Port Hub |
| HUB4D: | 4-Port Hub and Bus Isolator Module |

Feature Details



Internet Communication (IP150)

The IP150 Internet Module allows you to control and monitor your security system remotely through any web browser. It allows for email notifications of important system events such as alarms, arm/disarm events, and troubles. For example, receive an email at work when your kids get back from school. You can also view the live status of your system and arm/disarm it. For example, you have just left your office for the weekend but are not sure you remembered to arm the system. Simply check the status of your system from a laptop and arm it.



Wireless Communication (PCS Series)

The PCS series modules provide the Digiplex EVO control panels with wireless communication capabilities to report system events via IP, GPRS, and/or GSM. Whether it be uploading/downloading via IP or GPRS, receiving system status and events by voice or text message, or reporting to the monitoring station via IP, GPRS, or GSM, the PCS series enhances the communication capabilities of any Digiplex EVO installation.



Voice Communication (VDMP3)

The VDMP3 is a plug-in, voice-assisted module that can be programmed to call up to 5 telephone numbers in the event of an alarm. For example, when an alarm occurs at your store during off-hours, every employee can receive notification via telephone; e.g., "Area 1 in alarm. Zone 3. Press 1 to disarm the system..." You can also call the VDMP3 from an outside line, enabling you to arm or disarm the system as well as activate PGMs. The VDMP3 essentially turns any outside telephone into a keypad. The VDMP3 is easy to install; plug it in directly onto the panel, set the phone numbers, and select the activation event.



In-field Upgradable

Digiplex EVO is not only easy to install, but is also fully in-field upgradable for simple on-site updates. The process is effortless; connect the PC to the panel and you are a few clicks away from performing a complete system upgrade within minutes. No need to change panels or hardware; all the updates are done using Paradox's InField Firmware Upgrade Software.



Access Control

Access control can be added to the Digiplex EVO system to provide additional control over who has access to your premises, even when your security system is not armed and you are not there to supervise. With added access control you can limit access to certain areas, disallow access to others, or control entire groups of people according to their schedule or privileges. Make your premises inadmissible to all except those with access cards, track anybody who enters your premises, print detailed reports of access control activities, and more.



App-based System Control

The iParadox app enables you to remotely access your Paradox security system. iParadox provides lots of functionality and information at one's fingertip. The multi-lingual app has an intuitive user-interface which enables you to easily connect to your security system and edit its settings. With arm/disarm control, PGM control, and live system status, iParadox turns any iPhone, iPod Touch, iPad or Android™ phone into a remote keypad. Now you can control your Paradox security system from your favorite device!

TM50 Overview



9.6 cm
3.8 in

14.4 cm
5.7 in

TM50: Intuitive Touchscreen

- **SpotOn Locator™**
Upload photos, images, or schematics to eliminate the need for deciphering LED zone lights. These images display any door, window, or motion detector that are active. Since the images are uploaded by the user, they are truly customized, and can be unique to each installation. SpotOn Locator™ is integrated in the original firmware, and when purchased, is unlocked with an authorization code.
- **OneScreen Monitoring™**
Provides a real-time visual display of the system’s status on one screen. It allows the user to choose which partitions will be displayed showing arming level, alarm, ready, and troubles. It also displays zone statuses; open, close, bypass, alarm, and tamper. OneScreen Monitoring™ also features Solo Test™ mode, which allows installers and users to easily test all system zone’s via the TM50 Touch’s screen. OneScreen Monitoring™ is integrated in the original firmware, and when purchased, is unlocked with an authorization code.

Specifications

AC Power	16 Vac, 20 / 40 VA, 50 - 60 Hz
Battery	12 Vdc, 7 Ah minimum
Auxiliary Power	11.4 to 12.5 Vdc, 200 mA maximum, fuseless shutdown at 1.14A
Bell Output	11.4 to 12 Vdc, 1A maximum, fuseless shutdown @ 3A
PGM Output	PGM1 to PGM4 100 mA solid-state relays with +/- trigger, PGM5 Form C relay output rated at 5A / 28 Vdc N.O. / N.C.

Note: All control panel outputs are rated to operate between 11.4 Vdc and 12.5 Vdc.